

# EPWORTH WORSHIP TOGETHER,



## This week's big idea

All We Can



Micah 6; 6-8

What the Lord requires

'Do what is just, to show constant love, and to live in humble fellowship with our God '

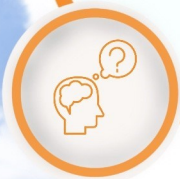
**Bible verse of the week**



Can you think of any ways in which you can do all you can?

How can we do all we can in our class, school and our community?

**Exploring  
further**



## Prayer of the week

Dear Lord,

Please help us to give generously, love unconditionally and help without hesitation. May we continue to do all we can in everything that we do.

Amen



## This week's worship song

The World is my Parish



## This week's activity



Visit the All We Can website to explore some of the amazing projects taking place



## Explore further at home



Think of how you can do all you can at home (not just in school).

Could you make someone else's day brighter?

Could do something for someone else?



## Quote of the week

"Our prime purpose in life is to help others" - Dalai Lama

## Picture of the week

