



# Westleigh Methodist Primary School Newsletter

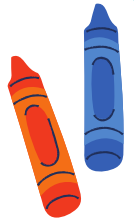


## Next week



Monday 24.3.25 8.30am	<b>Y5 residential. Arrive at school at 8.30am. Access school through school office. Return on Wednesday.</b>
Tuesday 25.3.25 8.30am 3pm in the hall 3.30pm	Nursery Stay and Play.  <b>Year 2 class worship</b> Year 2 and Year 3 Reading Club
Wednesday 26.3.25 3.30pm	Year 6 Maths Club Year 4 and Year 5 Reading Club <b>No Year 1 Reading Club today</b>
Thursday 27.3.25 3.30pm	Choir Club
Friday 28.3.25 3.30pm	WigLe Dance Club

Fri 21st  
March 2025



## A welcome from Mrs Boardman...

This week, Year 5 visited Bury fire station to learn all about fire safety. This was such a valuable experience and was an enjoyable way to learn key safety tips.



### Good Luck, Miss Kelly.

This Friday, Miss Kelly who works in our Nursery, started her maternity leave. I am sure you will join with us in wishing her good luck at such an exciting time.



## Contacting School

01942 702967

[enquiries@wlm.epworthtrust.org.uk](mailto:enquiries@wlm.epworthtrust.org.uk)

## 'Do All You Can' Golden Broom Award

Winner: Year 1

Well done for keeping your classroom tidy. Keep up the good work!



## Mrs Boardman Award

This week, this special award goes to WigLe dance group for their amazing performance at The Edge in front of 1000 people! Plus performing to our CEO and trustees on Tuesday.



## Good Work Awards

A highlight of my week is celebrating children's learning and fantastic effort with them.

- Ava-Maee and Harvey in Y5 produced detailed safety instructions about fire linked to their trip
- Evangeline in Y5 wrote fantastic key questions about earthquakes in Geography
- Lilly in Y4 produced informative work on John Wesley
- Arnie in Y2 wrote a brilliant Blue Crayon narrative including paragraphs, conjunctions and exclamation marks
- Hunter in Y1 used a variety of adjectives in his writing
- Ruby in Y5 wrote a fantastic timeline showing great knowledge of the Easter story.

Well done to all of these children!

## Kindness Awards

Kindness is important at Westleigh Methodist.

This week, we are celebrating...

- Oliver Y5 - showed kindness and care when helping his friend on the Y5 trip at the Fire Safety Centre.
- Arthur Y3 offered compliments and kind words to adults.



## Attendance

Class Weekly 'Attend like a Star everyday' Award Winners	Class Weekly 'Attend like a Star on time' Award Winners
Year 6 - 97.1%	Year 4

Well done to our winning classes Year 6 and Year 4 this week for winning the awards this week. Keep up the hard work!

Both classes are leading the way in winning these awards this year and it would be great to see some other classes winning these awards more.



**Attendance matters** and it is important your child is in school every day and on time.

Please ensure your child is on time for school each day. Gates close at 9am. Children are marked late when they enter school after 9am.

**5 MINUTES LATE PER DAY**  
Adds up to 3 days lost school time!



# Attendance Matters

Every student. Every day.

**Missed learning time really impacts children's progress and attainment.**

Please find your class weekly and yearly to date attendance below, alongside how many missed sessions this equals. 1 day = 2 sessions.

Year group(s) between 06 Sep 2024 and 20 Mar 2025	Weekly %	Weekly Sessions missed	YTD %	YTD sessions missed
Reception	90.7%	16	92.3%	348
Year 1	92%	24	92.6%	469
Year 2	91.6%	21	90.4%	564
Year 3	97%	6	95.7%	284
Year 4	95.3%	14	96.4%	242
Year 5	94.3%	17	92.2%	527
Year 6	97.1%	9	95.9%	294



## Safeguarding Our Children

In school we are supporting children more and more regarding their arguments on line. This inevitably spills over into school. This week there have been some unkind and abusive words used between children on Whatsapp. Please monitor your child's usage of social media. The app is rated 13 years +.



NSPCC guidance can be found here: <https://www.nspcc.org.uk/keeping-children-safe/online-safety/online-safety-blog/2023-01-12-is-whatsapp-safe-for-my-child/>



Christian Values  
Champion

## This Week's Awards Star of the Week



Year 6 Libby	Year 6 Levi
Year 5 Oliver	Year 5 All Year 5
Year 4 Mia D	Year 4 Aiva
Year 3 Olivia	Year 3 Parker
Year 2 Zak	Year 2 Charlie
Year 1 Aydin	Year 1 Jaxson
Reception Jesse	Reception Mia
Nursery Samuel	Nursery Danny



**We will be holding a Scholastic Book Fair –  
Thursday 24<sup>th</sup> April to Tuesday 29<sup>th</sup> April  
3.30-4pm in the school hall.**

The book fayre will contain a wide range of exciting titles and stationery.

There is something for every pocket on the book fair to assist with the rise in the cost of living. Approximately 30% of titles are under £5.

This fayre will be cashless, and you will be able to pay via QR code at the fair. Please bring your mobile phones and credit/debit cards to the fair as the card details need to be entered.





## Epworth Worship Together

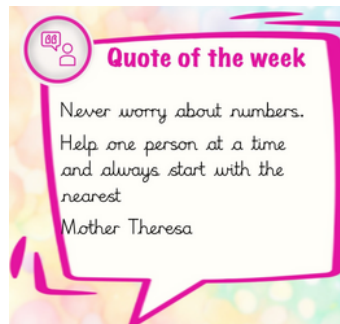


Each week we have a different focus for our Epworth Worship.

A film is shared between our family of Trust schools - a different film being produced each week by a different school. It is lovely to see the children of our Trust taking a lead in a different aspect of worship.

This week Epworth schools were led in worship by our children here at Westleigh Methodist. The Ethos Committee did a fantastic job and led worship with a focus on 'All We Can'. Miss Moseley and the whole school was so proud of them.

They set everyone the challenge in schools to create a poster that promotes the work of a Methodist charity.



## Visit Our Social Media Pages



Please see your child's social media page to see all the amazing work that is happening each week. We are using our pages to highlight the incredible curriculum opportunities that our children receive at Westleigh Methodist Primary School.

Westleigh Primary School @WLMPrimary

Nursery @WLMNursery

Reception @ReceptionWLM

Year 1 @WLMYear1

Year 2 @WLMYear2

Year 3 @WLMYear3

Year 4 @WLMYear4

Year 5 @WLMYear5

Year 6 @WLMYear6