



# Westleigh Methodist Primary School Newsletter



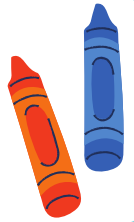
## Next week



Tuesday 28.1.25	Y4 - Y6 Yoga Club
3.30pm	Y2 Reading Club
	Y3 Reading Club - cancelled
Wednesday 29.1.25	Y1 Reading Club
3.30pm	Y5 Reading Club
	Y6 Maths Club
Thursday 30.1.25	Y1 - Y2 Doodle Sticks Club
3.30pm	Y2 - Y6 Choir
	Y4 Reading Club
Friday 21.1.25	Y2 - Y6 WigLe Dance Club
3.30pm	



Friday 25th  
January 2025



## A Note from Mrs Boardman...

### Win Pantomime Tickets

There is still time to enter Mrs Coleman's competition to create a book review to win tickets to a local pantomime. Please see later pages of the newsletter to see how to enter by Monday 27th January. Good luck!

NSPCC Number Day - 7th February  
We are supporting this worthy cause again this year and inviting children to come to school dressed as something related to numbers. We will be raising money for NSPCC in conjunction with other schools in the Trust. Please see the later article in the newsletter.



## Contacting School

01942 702967

[enquiries@wlm.epworthtrust.org.uk](mailto:enquiries@wlm.epworthtrust.org.uk)

## 'Do All You Can' Golden Broom Award

Winner: Year 1

Well done for keeping your classroom tidy. Keep up the good work!





# Mrs Boardman Award



This week, this special award goes to Charlie in Y2. Charlie was nominated by Mrs Taylor because he gave a friend colouring pens who did not have any without being asked.

He also went into his own bag to give another friend 2 Sonic colouring sheets.

So kind and all unprompted. Well done, Charlie. You always shine.



## Good Work Awards



It is lovely to celebrate great work achievements with the children. This week I have shared amazing work with...

- Evangeline in Y5 came to my office with her fantastic French work. She had been writing in detail about the opening hours of shops. This was of such high quality and beyond what I had ever done at school. This is the second week on the run that Evangeline has shared various pieces of work. She definitely has a thirst for learning.
- Chase in Y4 shared his amazing Art which showed a range of brush strokes using paint.
- Arnie in Y2 was nominated this week by Mrs Seddon. He showed a great knowledge of medicine rules. Well done Arnie for showing a really good understanding.



## Kindness Awards

Lilly May showed kindness this week. She helped to stack away plates in the hall and was a really good help to the ladies in the kitchen.

Well done, Lilly May.

I am kind

Class Weekly 'Attend like a Star everyday' Award Winners	Class Weekly 'Attend like a Star on time' Award Winners
Year 6 99.4%	Year 6

Well done to our winning class Year 6 for winning both the Attendance and Punctuality Award this week. 99.4% is an amazing achievement this week – well done Y6.



Unfortunately there has been 195 late marks since returning at Christmas – 83 children make up these 195 lates.

These are shockingly sad figures.

Please can you all ensure you children are in school every day on time as this really has an impact on them missing their learning at the start of the day.

## Attendance

Please find your class weekly and yearly to date attendance below, alongside how many missed sessions this equals. 1 day = 2 sessions.

Year group(s) between 03 Sep 2024 and 23 Jan 2...	Regist... ↑↓	Weekly % ↓	Weekly Se... ↓	YTD % ↓	YTD sessi... ↓
Reception	Reception ...	88.8%	24	92.2%	266
Year 1	Year 1	93.3%	15	95%	310
Year 2	Year 2	92.6%	18	91.3%	359
Year 3	Year 3	93.6%	17	96.1%	185
Year 4	Year 4	94.1%	17	96.8%	155
Year 5	Year 5	94.2%	12	92.8%	348
Year 6	Year 6	99.4%	2	96.6%	179



## NSPCC Number Day 7th February



We are supporting this worthy cause again this year and inviting children to come to school dressed as something related to numbers.

We will be raising money for NSPCC in conjunction with other schools in the Trust.

Two staff members from Bakewell Primary School, Sarah and Catherine, are running the London marathon in April.

We will be donating to their Just Giving page and all donations will go to the NSPCC...a charity close to our hearts.

Mrs Coleman will be sending out more information nearer the date.

## The Magic of Seeing a 'Live' Show!

We have been lucky to receive some free tickets to give away for St Joseph's players pantomime production of Aladdin at St Joseph's hall in Leigh, Thursday 30th January. To win a family set of four tickets, we are running a competition for pupils to create a book review or double page spread based on their favourite book, book as a hook, or story they have listened to in school. The entry deadline is **Monday 27th January**. Five winners will then be selected to receive four tickets to see the show. Tickets are also available to buy from [TICKETSOURCE.CO.UK/ST-JOSEPHS-PLAYERS](https://TICKETSOURCE.CO.UK/ST-JOSEPHS-PLAYERS). If you have any further questions, please Dojo message Mrs Coleman.

Good luck everyone!

A Registered Charity  
No: 1207535

presented by: 

# Aladdin

WEDNESDAY 22ND JANUARY -  
SATURDAY 1ST FEBRUARY 2025

St Joseph's Hall, Chapel St Leigh, WN7 2DB  
Wednesday, Thursday, Friday: 7:15 pm  
Matinees: 25th, 26th, 1st - 1 pm  
Saturday Evening: 6:15 pm

**TICKETS:**  
ADULTS - £12 UNDER 16s - £6

10% DISCOUNT FOR GROUPS 10 AND OVER  
[TICKETSOURCE.CO.UK/ST-JOSEPHS-PLAYERS](https://TICKETSOURCE.CO.UK/ST-JOSEPHS-PLAYERS)



# Safeguarding Our Children



The local authority has asked me to share some key messages with children and families regarding Winter water safety and frozen ponds, lakes and canals. My worship time on Monday will cover this with the children and my message will be to not go on the ice at all. If you would like to discuss this with your children at home, a good source of information can be found at: <https://www.rlss.org.uk/pages/category/water-safety-information>



Christian Values  
Champion

## This Week's Awards Star of the Week



Year 6 Rhys	Year 6 Honey
Year 5 Ruby	Year 5 Luke
Year 4 Vehongha	Year 4 Autumn
Year 3 Parker	Year 3 Takura
Year 2 Finley	Year 2 Raysa
Year 1 Skyler	Year 1 Archie H
Reception Amelia	Reception Darcie
Nursery Danny	Nursery Toby



# Epworth Worship Together



Each week we have a different focus for our Epworth Worship.

A film is shared between our family of Trust schools - a different film being produced each week by a different school. It is lovely to see the children of our Trust taking a lead in a different aspect of worship.

This week, we discussed how we could be more inclusive. This is something that is so important to us at Westleigh - making sure everyone feels they belong and are safe and secure.



## Westleigh Methodist Worship



This week in our worship, Mrs Coleman shared information with children on Infinite 8. This outlines Epworth's offer of 8 opportunities for children to enjoy meaningful experiences beyond the taught curriculum during their time in an Epworth Trust school. Please see our website for more details.



## Visit Our Social Media Pages



Please see your child's social media page to see all the amazing work that is happening each week. We are using our pages to highlight the incredible curriculum opportunities that our children receive at Westleigh Methodist Primary School.

Westleigh Primary School @WLMPrimary

Nursery @WLMNursery

Reception @ReceptionWLM

Year 1 @WLMYear1

Year 2 @WLMYear2

Year 3 @WLMYear3

Year 4 @WLMYear4

Year 5 @WLMYear5

Year 6 @WLMYear6