



Westleigh Methodist Primary School Newsletter



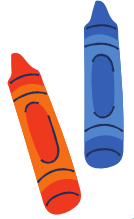
Next week



Tuesday 21.1.25	Y4 - Y6 Yoga Club
3.30pm	Y1 Reading Club
	Y2 Reading Club
	Y3 Reading Club
Wednesday 22.1.25	Y4 Reading Club
3.30pm	Y5 Reading Club
	Y6 Maths Club
Thursday 23.1.25	Y1 - Y2 Doodle Club
3.340pm	Y2 - Y6 Choir
Friday 21.1.25	Y2 - Y6 WigLe Dance Club
3.30pm	



Friday 17th
January 2025



A Note from Mrs Boardman...

After school on Thursday, I just had to visit our new choir in the hall! It was definitely my 'wow' moment of the week. Their voices were beautiful and it was lovely to hear them sing to their hearts' content.



There is still opportunity to join Mr Brocken's choir. Please contact the office. Music gives children the chance to express themselves, to explore their creativity, to work hard at something, persevere and shine. At Westleigh...we shine!



Contacting School

01942 702967

enquiries@wlm.epworthtrust.org.uk

'Do All You Can' Golden Broom Award

Winner: Year 6

Well done for keeping your classroom tidy. Keep up the good work!





Mrs Boardman Award



This week, a Reception parent contacted school to praise Lucas J as he recognised her child was nervous walking up into school near all the taller, older children. Lucas shouted to get everyone's attention, asked them to move and made a pathway for her child to walk through. Year 6 also gave Lucas a round of applause too. What a caring thing to do! I am so proud.



Good Work Awards



It is lovely to celebrate great work achievements with the children. This week I have shared amazing work with...

- In Y3, Arthur, Rory and Aksa all proudly shared their Three Little Pigs rhyming couplet poems.
- In Y2, Ayyat's great adjectives gave extra detail to her writing to describe a good leader.
- Harrison in Y2 was nominated twice for great work! Mrs Seddon was so impressed with his fantastic spellings and Phonics work in his Read, Write, Inc group.
- In Y2, Dovydas shared his detailed description of 'granny' using expanded noun phrases. This really helped to paint a picture of the character in my mind.
- Leeza in Y1 proudly showed me her beautiful handwriting. I was so proud of her effort.
- In Y5, Evangeline's report on Mount Everest used paragraphs and a great use of brackets to share all the information. A fantastic piece of non-fiction writing! Well done.

Class Weekly 'Attend like a Star everyday' Award Winners	Class Weekly 'Attend like a Star on time' Award Winners
Year 3 98.5%	Year 3

Well done to our winning class Year 3 for winning both the Attendance and Punctuality Award this week.

Attendance



Let's all make 2025 the year that all children 'Attend like a Star' and are in school every day and on time.

Please find your class weekly and yearly to date attendance below, alongside how many missed sessions this equals. 1 day = 2 sessions.

Year group(s) between 05 Sep 2024 and 16 Jan 2025	Registr...	Weekly %	Weekly Sessions missed	YTD %	YTD sessions missed	Group Size
Reception	Reception ...	93.4%	12	92.4%	242	27
Year 1	Year 1	90.9%	27	93%	295	30
Year 2	Year 2	91.4%	21	91.2%	341	31
Year 3	Year 3	98.5%	4	96.3%	168	30
Year 4	Year 4	96.5%	10	96.9%	138	29
Year 5	Year 5	92.3%	22	92.7%	336	32
Year 6	Year 6	96.1%	12	96.4%	177	31

There is still time to book...



EXTRA FLU VACCINE CLINICS for school aged children

- Children in reception to year 11
- Locations across Greater Manchester
- 11 - 18 January 2025



Call 03333 583 397 (option 1) to book

The Magic of Seeing a 'Live' Show!

We have been lucky to receive some free tickets to give away for St Joseph's players pantomime production of Aladdin at St Joseph's hall in Leigh, Thursday 30th January. To win a family set of four tickets, we are running a competition for pupils to create a book review or double page spread based on their favourite book, book as a hook, or story they have listened to in school. The entry deadline is Friday 24th January. Five winners will then be selected to receive four tickets to see the show. Tickets are also available to buy from TICKETSOURCE.CO.UK/ST-JOSEPHS-PLAYERS. If you have any further questions, please Dojo message Mrs Coleman. Good luck everyone!



A Registered Charity
No: 1207535

presented by:
ST JOSEPH'S PLAYERS COMPANY

Aladdin

WEDNESDAY 22ND JANUARY -
SATURDAY 1ST FEBRUARY 2025

St Joseph's Hall, Chapel St Leigh, WN7 2DB
Wednesday, Thursday, Friday: 7:15 pm
Matinees: 25th, 26th, 1st - 1 pm
Saturday Evening: 6:15 pm

TICKETS:
ADULTS - £12 UNDER 16s - £6

10% DISCOUNT FOR GROUPS 10 AND OVER
TICKETSOURCE.CO.UK/ST-JOSEPHS-PLAYERS





Safeguarding Our Children



This week, Year 6 have taken part in Bikeability sessions. The children have learnt how to check their bikes and surroundings. They have also moved safely and communicated their intentions to other road users. This is all part of keeping our children safe.



Christian Values
Champion

This Week's Awards Star of the Week



Year 6 Rhys	Year 6 Honey
Year 5 Ruby	Year 5 Luke
Year 4 Vehongha	Year 4 Autumn
Year 3 Parker	Year 3 Takura
Year 2 Finley	Year 2 Raysa
Year 1 Skyler	Year 1 Archie H
Reception Amelia	Reception Darcie
Nursery Danny	Nursery Toby



Epworth Worship Together



Each week we have a different focus for our Epworth Worship.

A film is shared between our family of Trust schools - a different film being produced each week by a different school. It is lovely to see the children of our Trust taking a lead in a different aspect of worship.

This week, we looked together at the Methodist Covenant Service where we agree to live within the loving relationship that God has already offered us.



Westleigh Methodist Worship

This week in our worship, we have revisited how school keeps us physically safe through fire drills and invacuation drills - we will be having this term's fire drill next week. We have also looked at British Values and 'rule of law' and added photos to our display about how this applies to us in school.



Visit Our Social Media Pages



Please see your child's social media page to see all the amazing work that is happening each week. We are using our pages to highlight the incredible curriculum opportunities that our children receive at Westleigh Methodist Primary School.

Westleigh Primary School @WLMPrimary

Nursery @WLMNursery

Reception @ReceptionWLM

Year 1 @WLMYear1

Year2 @WLMYear2

Year3 @WLMYear3

Year 4 @WLMYear4

Year 5 @WLMYear5

Year 6 @WLMYear6