

EPWORTH WORSHIP TOGETHER,



This week's big idea

Week 7

Wisdom



Matthew 7: 24-29

"Everyone who hears these things I say and obeys them is like a wise man. The wise man built his house on rock."

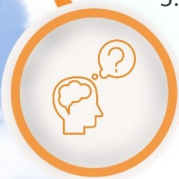


Bible verse of the week



1. What must a person do to be like the wise man who built his house on a rock? (Hear the words of Jesus and put them into practice)
2. A person who hears the words of Jesus but does not put them into practice is like a house builder who builds his house on what? (Sand)
3. Jesus said that someone who builds their house on sand is like someone who listens to Jesus and then does what? (They listen to Jesus' words, but they don't follow them or put them into practice)
4. What did the disciples learn from this parable?
5. What does this parable teach you about God or Jesus?

Exploring further



Prayer of the week



Almighty God, I humbly ask that You grant me wisdom to make sound choices and decisions. Open my eyes to see your truth clearly. Give me spiritual discernment to distinguish right from wrong. Help me trust in your infinite wisdom to guide my steps. Grant me a heart eager to gain wisdom from your word and wise counselors.

Let Your wisdom shape my thoughts, words, and actions each day. In Jesus' name, Amen.

This week's worship song

From The Tiny Ant

<https://www.youtube.com/watch?v=0sUPK7LqAj8>



This week's activity



Discuss the following questions and add notes into your Worship Books.

What did God make?

What is your favorite thing God made?

What do you think is the most important thing God made?

What did God give to the humans?

What do you think God meant by "rule" over the animals and all living things?

What changes do you think you and your school can make to help sustain the world that God made for everyone?

Explore further at home

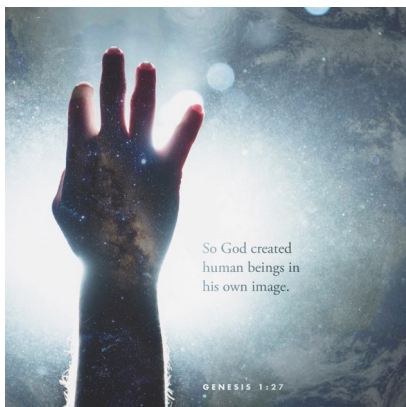


Sustainable practises you can do at home:

- Avoid disposable items
- Reduce your waste
- Grow a sustainable garden
- Buy products with less packaging
- Recycle Properly
- Buy less, buy better
- Be water wise
- Shop local and support small businesses
- Reduce your energy use.



Quote of the week



Picture of the week

