



Westleigh Methodist Primary School Newsletter



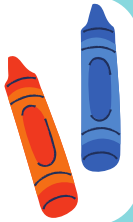
Next week



Monday 15.9.25
3.30

Creative Writing Club

Monday 15th September 2025



A note from Mrs Boardman...

"Attend Like a Hero!" is our new attendance initiative. Just like heroes show up when they are needed most, we want all our children to show up every day, ready to learn and shine.

Every lesson counts - missing school means missing out on new skills and knowledge. Regular attendance builds routines, resilience, and a sense of responsibility. Being in school every day helps children feel part of the team, supporting friendships and confidence.

Here are two pupils who have achieved 100% attendance last week and Reception have won Attendance Ted for the best attendance as a class across the week.



Welcome to our new teaching assistant!

We are very excited to share that we have a new member joining our Westleigh team! This term, we warmly welcome Miss Southern, our new teaching assistant. Miss Southern will be working across classes to support children in their learning, helping them to feel confident, happy, and ready to succeed each day.



Contacting School

01942 702967



enquiries@wlm.epworthtrust.org.uk

'Do All You Can' Golden Broom Award

Winner: Year 5

Well done for keeping your classroom tidy. Keep up the good work!





Good Work Awards RE Day - Exploring Religions Together



Last week, children in Year 2-6 took part in a very special RE Day, where they had the chance to explore and learn about five different religions. The children moved around school to visit different teachers, with each classroom focusing on a different faith. They showed curiosity, respect, and enthusiasm as they discovered more about different faiths and traditions.

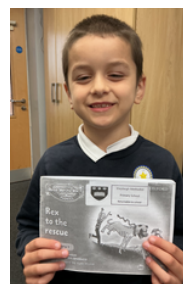


Mrs Boardman's Award A Story Telling Star!



Draven in Year 2 has shared his fantastic reading skills last week. He demonstrated the brilliant way he can read aloud, using expression just like a real storyteller.

Well done, Draven!



Attendance

Attendance	Reception 98.8%
Punctuality	Year 5

Well done to Reception for winning Attendance Ted last week. Also a huge congratulations to Year 5 - all children were on time every day!

An amazing start to the year!



Year group...	Week...
Reception	98.8%
Year 1	97.6%
Year 2	95.3%
Year 3	95.2%
Year 4	88.3%
Year 5	96.1%
Year 6	96.4%



Safeguarding Our Children



Last week we have reminded families that the **High School car park** next to Westleigh Methodist is not to be used when dropping off or collecting children. We have had several serious safety concerns. Cars entering and leaving the car park while children are walking through have created dangerous situations. The car park is also needed for high school staff, and when it is used by our families, staff cars are being blocked in.

We encourage families to make use of the designated parking areas or to walk where possible.

Continued use of this car park may result in the high school locking the gate completely.

Thank you to those families who have supported school and made the change to keep our children safe.



Each week we have a different focus for our Epworth Worship.

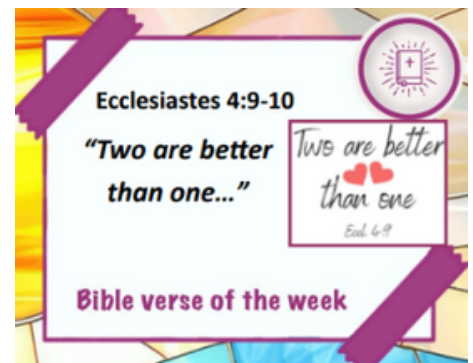
A film is shared between our family of Trust schools - a different film being produced each week by a different school. It is lovely to see the children of our Trust taking a lead in a different aspect of worship.

Last week, we focused on the value of collaboration and how working together is better. In classes, we then reflected on times when we achieved something because we worked together.

Our classes also thought of times when we helped someone and it made the job easier.

It was also interesting to discuss what happens if people don't collaborate.

Two are definitely better than one!



Christian Values

Champion

This Week's Awards

Star of the Week



Year 6 Cody	Year 6 Rowan
Year 5 Albie	Year 5 Milo
Year 4 Dexter	Year 4 Olivia
Year 3 Danielle	Year 3 Oliver
Year 2 Draven	Year 2 Beatrice
Year 1 Sofia	Year 1 Ariella
Reception Avery	Reception Hudson
Nursery Finley	Nursery Mahrosh

Westleigh Worship

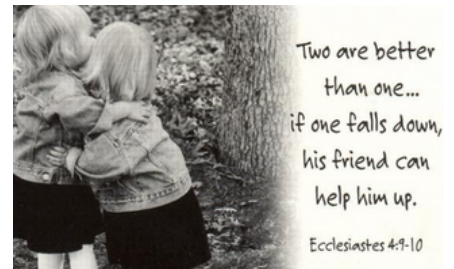


In our worship last week, we explored the theme of working with others and the many benefits of teamwork. To bring this idea to life, two pairs of children were invited to the front for a special challenge! Each pair had to balance a balloon on their heads for 30 seconds - without using their own hands. The only way to succeed was to work together and use each other's support. The children quickly discovered that teamwork made the challenge not only easier but also a lot more fun!

We thought about times when teamwork is essential - playing football, solving tricky Maths problems, carrying something heavy, or even when facing challenges in life.

Our reflection encouraged us to think in three ways:

- Looking In: Have you ever helped someone? How did it feel?
- Looking Out: What do Methodists believe about helping others? (We remembered John Wesley's words: "Do all you can...")
- Looking Up: What does God teach us in the Bible? We considered how Jesus showed courage in helping others, through stories such as the Feeding of the 5,000, the Good Samaritan, and the healing of the sick.



This worship reminded us that we are never alone - when we work together and support one another, amazing things can be achieved.



Visit Our Social Media Pages



Please see your child's social media page to see all the amazing work that is happening each week. We are using our pages to highlight the incredible curriculum opportunities that our children receive at Westleigh Methodist Primary School.

Westleigh Primary School @WLMPrimary

Nursery @WLMNursery

Reception @ReceptionWLM

Year 1 @WLMYear1

Year 2 @WLMYear2

Year 3 @WLMYear3

Year 4 @WLMYear4

Year 5 @WLMYear5

Year 6 @WLMYear6